



11 PROSPECT PLACE

GRAYS, RM17 6BY

£435,000
FREEHOLD

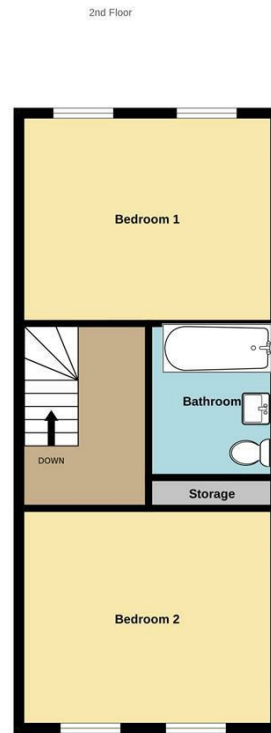
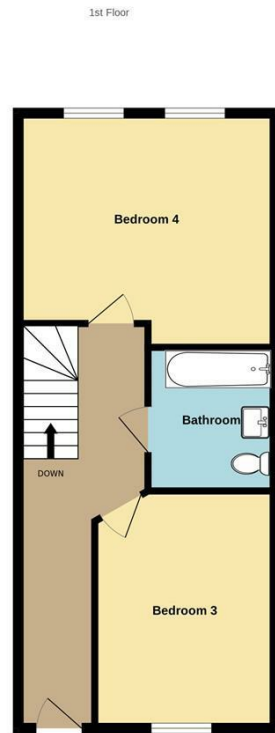
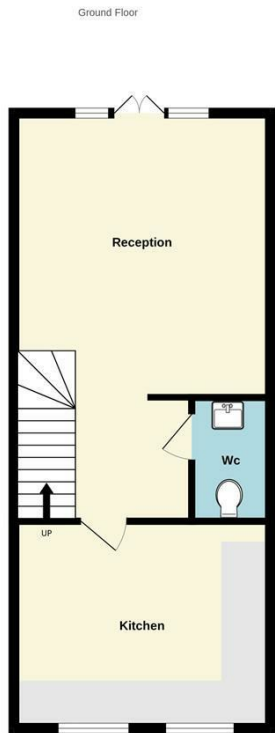
A Must-See!

Stunning New 4-Bedroom Family Home.

Thomas Marsh welcomes to the market this brand-new 4-bedroom home with its modern refurbishments and unique layout, this property would be ideal for family's, investors and potential first time buyers. Perfectly situated within a short walk to Grays Town Centre and convenient transport links via the C2C. This property offers the luxury of allocated parking and is available with no onward chain, making it move-in ready for the right buyer.

Don't miss out on this exceptional opportunity—schedule a viewing today!

tm
thomas marsh



Whilst every attempt has been made to ensure the accuracy of the floorplan contained here, measurements of doors, windows, rooms and any other items are approximate and no responsibility is taken for any error, omission or mis-statement. This plan is for illustrative purposes only and should be used as such by any prospective purchaser. The services, systems and appliances shown have not been tested and no guarantee as to their operability or efficiency can be given.
Made with Metropix ©2024



Energy Efficiency Rating		Current	Potential
Very energy efficient - lower running costs			
(92 plus) A			93
(81-91) B		81	
(69-80) C			
(55-68) D			
(39-54) E			
(21-38) F			
(1-20) G			
Not energy efficient - higher running costs			
England & Wales		EU Directive 2002/91/EC	

Agents Note: Whilst every care has been taken to prepare these particulars, they are for guidance purposes only. All measurements are approximate and are for general guidance purposes only and whilst every care has been taken to ensure their accuracy, they should not be relied upon and potential buyers/tenants are advised to recheck the measurements

Grays Sales
47 Orsett Road
Grays
Essex
RM17 5HJ

01375 370779
sales@thomas-marsh.com
www.thomas-marsh.com

